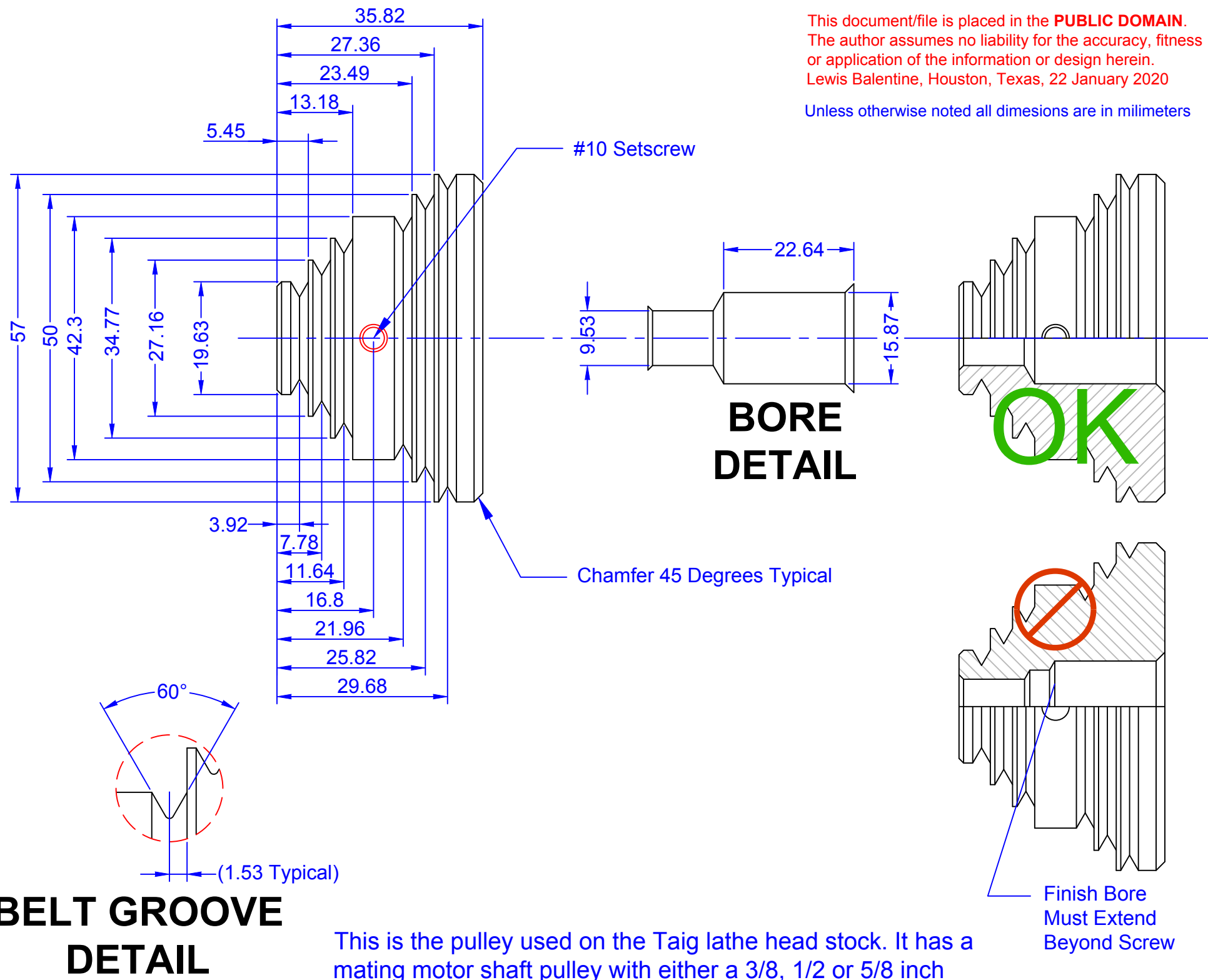


This document/file is placed in the **PUBLIC DOMAIN**.
The author assumes no liability for the accuracy, fitness
or application of the information or design herein.
Lewis Balentine, Houston, Texas, 22 January 2020

Unless otherwise noted all dimensions are in millimeters



BELT GROOVE DETAIL

This is the pulley used on the Taig lathe head stock. It has a mating motor shaft pulley with either a 3/8, 1/2 or 5/8 inch diameter shaft motors.

Finish Bore
Must Extend
Beyond Screw